

# BridgeWare™

## CONTINUOUS DATA SYNCHRONIZATION FROM HP e3000 TO OPEN SYSTEMS

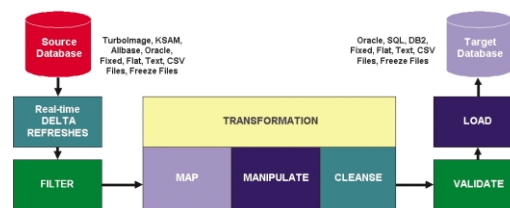
- Eliminates need for downtime during migration = zero impact migration
- Migrates data across platforms from MPE to open systems as well as bi-directionally
- Generates scripts instantly and captures delta changes
- Provides a world-class ETL (Extract-Transform-Load) tool that can be used AFTER the migration
- Passes real-time or scheduled delta extractions to the transformation engine as data moves to heterogeneous file structures or RDBMSs

Between now and the end of 2006, more than 25,000 organizations that rely on the HP e3000 will have to plan a migration. C-level executives must make adjustments to their two- and five-year plans and seek solutions to minimize the impact of the inevitable migration on their infrastructure budget, ongoing application availability and future operations. It's not just a matter of logistics; migration is strategic because it involves long-range planning and changes to internal culture and vendor relationships, all of which can ultimately affect your company's profitability. How do you complete a migration without introducing risk? It is critical to identify the vital applications and evaluate the cross-platform demands with existing applications and the integration of new applications. Today's IT decision maker is faced with migration choices: port-emulate applications, program new state-of-the-art applications, purchase new applications.

Whatever choice is made will involve data movement. However, selecting the wrong method for data movement can prove to be disastrous. An outage during a migration can have significant impact to a business, and not only for 24x7 shops.

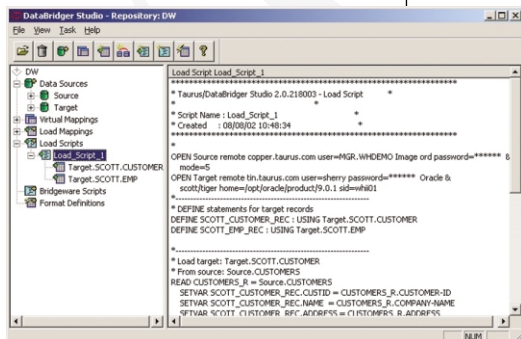
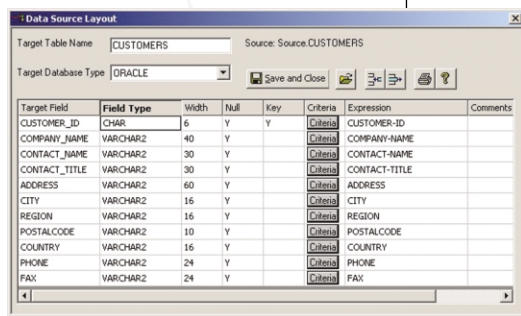
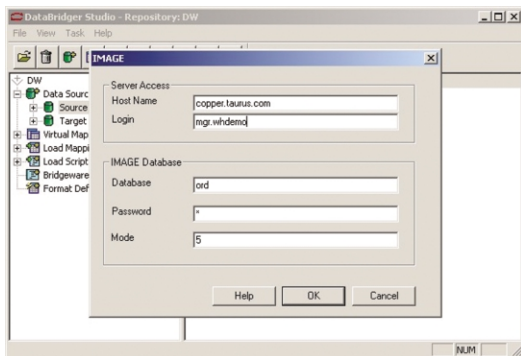
BridgeWare™, the cooperative endeavor between Quest Software and Taurus Software, enables data movement between HP e3000 and open systems. BridgeWare addresses one-time data migration; continual data movement to data warehouses, data marts and new open system applications; and consolidates data into a centralized common database. BridgeWare provides real-time or scheduled posting of TurboIMAGE, KSAM, or updates to MPE files to Oracle RDBMSs, DB2 and SQL Server running on UNIX or NT systems, giving users the power to access and update data across multiple platforms. BridgeWare, an Extraction Transformation and Loading (ETL) tool, combines all of the capabilities of Quest Software's technology with Taurus Software's technology. This combination makes BridgeWare the first product capable of bulk or transaction-by-transaction cross-platform data replication for HP e3000 sources.

BridgeWare HP e3000 Migration to Open Systems



BridgeWare populates changes to open systems with minimal impact to the existing environment, which is critical in a migration cutover. Since BridgeWare provides delta refreshes, the two environments can coexist until the cutover takes place.

In a matter of minutes an HP e3000 can be retired and all the new data converted to the new platform and data structures. It is seamless, fast and accurate with minimal disruption to your daily business activities. BridgeWare is also bi-directional and can allow the new system and old system to work together in coexistence for historical purposes or to perform parallel testing before the cutover takes place.



HP e3000 migration is simple as 1-2-3, using BridgeWare. Below are screen shots of BridgeWare's workbench tool that manages data movements with a simple point and click.

### Step 1 - Central Migration

Large shops, consultants and application providers can easily migrate data to and from anywhere in the world. The connection wizard will guide you through the process of opening databases, browsing data and creating a new data target in any remote or local location.

### Step 2 - Mapping

- Browses data to find "dirty" data
- Defines conversion rules
- Defines business rules as user-defined validations
- Simulates conversion without a target server
- Maps from multiple sources to multiple targets

### Step 3 - Automatic Data Movement

BridgeWare's Studio automatically generates initial and incremental load scripts necessary to move the data from source to target, plus:

- Reduces coding up to 80%
- Avoids errors
- Optimizes performance
- Moves delta changes
- Reduces business outages during migration
- Provides bi-directional capabilities
- Changes RDBMS on the fly
- Resolves data differences between MPE and Oracle

BridgeWare allows users to deliver current information from anywhere to anywhere in the enterprise and do it without the latency or programming efforts previously required. BridgeWare is the only product today that gives users the migration tools needed to move from HP e3000 with minimal application and business interruption.

While it's important to get your migration planning process underway quickly, it's also important not to act rashly. Quest Software has supported the HP e3000 platform for more than 15 years, and as an **HP e3000 Transition Tool Provider**, Quest Software gives IT organizations confidence during their migration from the HP e3000 to their new environment.



8001 Irvine Center Drive  
Irvine, CA 92618  
www.quest.com  
e-mail: info@quest.com  
US and Canada 949.754.8000  
Please refer to our Web site for  
regional and international  
office information.