



Quest® Management Pack for .NET

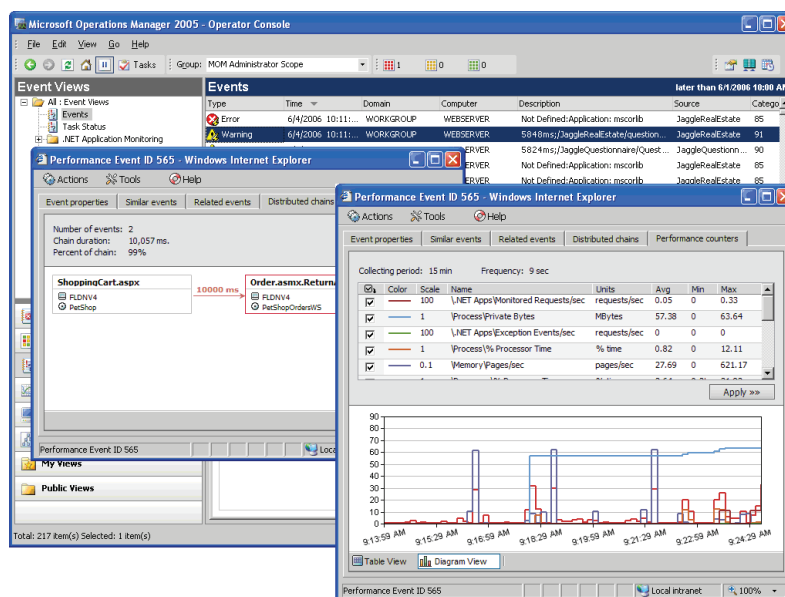
Extend Microsoft Operations Manager 2005 to Drive .NET Application Service Levels

To meet the needs of evolving business strategies, IT organizations are increasingly deploying application and services based on .NET technologies. These applications are being utilized for customer-facing, revenue-generating applications as well as internal applications that are critical to business operations. These applications have become more distributed in nature, which increases management complexity.

The lack of an adequate .NET application management solution results in:

- Inability to mitigate the risk and business impact of .NET applications that do not meet Service Level Agreements (SLAs)
- Inability to proactively prevent performance degradation or application failures before end users report issues
- Incompatible toolsets creating delays in incident and problem resolution
- Inability to properly pinpoint the root cause of performance degradation or application failures for quick resolution
- Developers spending too much time in product application debugging and not writing code for business value

As part of the Quest family of products that extend Microsoft Operations Manager 2005, the Quest Management Pack for .NET enables companies to manage .NET applications service levels through proactive monitoring and real-time diagnostics. Service levels are ensured through tools that IT operations and



Extend MOM 2005 to monitor .NET applications and collect root cause diagnostic information in real time.

- Native management pack integration with the Microsoft Operations Manager (MOM) 2005 operator and management consoles
- Proactive monitoring and real-time diagnostics to discover, diagnose, and resolve application and web service performance and exception issues
- Single-trace functionality to collect deep-dive component and method-level detail of a single user request
- Hot spot trend reporting for application performance and exceptions
- Visual Studio Team Foundation Server (TFS) integration to quickly pinpoint exception issues to the line of code
- Creation of Visual Studio TFS work items from performance and exception events to speed root cause analysis by development

System Requirements:

Monitored Systems

Windows 2000 Advanced Server
Windows Server 2003, 32 bit and
64 bit

.NET Framework 1.1
.NET Framework 2.0
.NET Framework 3.0

Internet Information Services 5.0
Internet Information Services 6.0

development staff can use to optimize and validate business-critical .NET applications and web services. The Quest Management Pack for .NET optimizes the incident and problem management process by enabling efficient discovery, diagnosis and resolution of application issues, before impact is felt by the end user or the business. The Quest Management Pack for .NET, in conjunction with Microsoft Operations Manager 2005, helps to guarantee and deliver .NET application and web services.

Native Integration with Microsoft Operations Manager 2005

The Quest Management Pack for .NET extends the MOM 2005 Operator Console for .NET application state, event, and alarm management as well as centralized task management for monitoring and deployment of agents. The MOM 2005 Management Console is also extended for out-of-the-box management pack modification.

Proactive Monitoring of Application and Web Service Performance and Availability

Monitor transactions in real time to discover application failures or degraded response times before end users or the business are affected.

Real-Time Root Cause Diagnostics to Speed Resolution Time

Isolate performance bottlenecks on specific resources such as ASP.NET, ADO.NET, and web services in single user transactions. Gather SQL statements and parameters to correctly tune slow-performing SQL. Collect the complete call stack and object state at the moment of failure in distributed applications. Eliminate the need for developers to create code for diagnostic information.

Application Hot Spot Reporting and Trending

Inform application development of potential problems in .NET applications and web services. Validate application availability and reliability with trend analysis and reporting.

Visual Studio Team Foundation Server Integration

Developers can go directly from to exception events to the line of code with the Visual Studio integration for quick time to resolution of application failures. They can also automatically create Visual Studio TFS work items from performance and exception events to automate the problem management process and link production support with development.

For more information on the Quest Management Pack for .NET and Quest's solutions for .NET applications, please call 800.663.4723 or visit us at <http://www.quest.com/net>.

About Quest Software, Inc.

Quest Software, Inc. delivers innovative products that help organizations get more performance and productivity from their applications, databases and Windows infrastructure. Through a deep expertise in IT operations and a continued focus on what works best, Quest helps more than 50,000 customers worldwide meet higher expectations for enterprise IT. Quest Software can be found in offices around the globe and at www.quest.com.



www.quest.com
e-mail: info@quest.com
Please refer to our Web site for
international office information.



©2007 Quest Software, Inc. All rights reserved. Quest is a registered trademark of Quest Software. All other brand or product names are trademarks or registered trademarks of their respective companies.
DSA-QMgmtPack.NET-US-VC