



# Quest<sup>®</sup> Capacity Manager for SQL Server

## The Easy Way to Do Capacity Trending and Forecasting

It's challenging to maintain the best possible performance in your SQL Server environments, – and keep downtime to a minimum. To administer the environments efficiently, you need to easily view server resources and anticipate growth. Without a clear picture of your resource consumption, you can't identify if you're getting a good return on your storage investment.

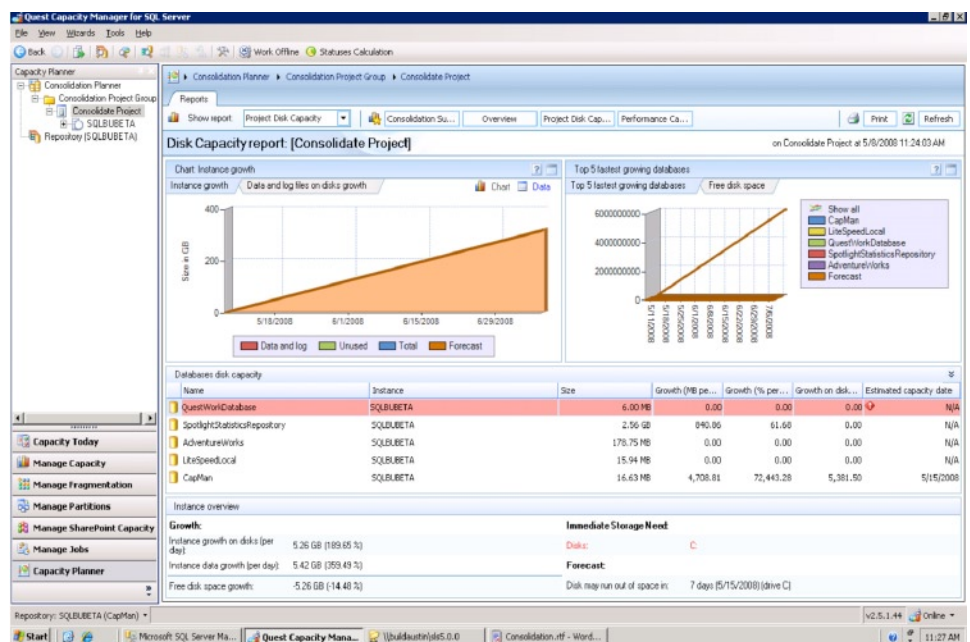
With Quest Capacity Manager for SQL Server, you can gain control of disk space, growth rates and database performance through a single console that delivers a holistic view of capacity across the database environment. An intelligent index maintenance function provides advice and metrics for consolidation projects and ensures that index maintenance occurs during maintenance windows. In addition, Quest Capacity Manager helps you plan capacity for SQL Server databases and applications such as SharePoint.

*"Quest Capacity Manager is a valuable tool for anyone involved with capacity planning, forecasting and trend analysis. As a database administrator, I am responsible for more than 100 servers in addition to other daily tasks. Quest Capacity Manager saves time by allowing me to quickly see which servers need my immediate attention."*

-Thomas LaRock,  
Database Engineering Team Lead  
ING Investment Management

### Core Differentiator:

- Forecasts disk space requirements for future database consolidation
- Provides a centralized view of capacity across the database environment
- Ensures intelligent index maintenance during maintenance windows
- Improves performance through simplified table partitioning



Detailed disk capacity report from Quest Capacity Manager

## Features and Benefits

### Fast Capacity Status Review

Get a quick overview of the monitored system as well as its health in key areas: registered SQL Server instances, capacity, fragmentation, and SharePoint.

### Simplified Partition Management

Create, alter, and delete partitions in SQL Server 2005 and 2008 tables through an easy-to-use interface.

### Intelligent Defragmentation with Maintenance Window Support

Configure advanced, automatic analysis and reorganization of fragmented database objects based on defragmentation profiles. These profiles help you to pre-set different fragmentation thresholds and

## System Requirements

### Hardware Requirements

- Computer with Pentium IV (Core 2 Duo recommended) or compatible processor
- Minimum 512MB
- Minimum 130MB of disk space for a full installation (includes up to 54 MB of temporary setup files that are removed automatically after installation)
- CD-ROM drive or Internet connection (required for installation only)
- VGA monitor, 1024 x 768 resolution, small fonts

### Software Requirements

- .Net Framework 2.0 must be installed on the console before installing Quest Capacity Manager.
- SharePoint 2003, Office SharePoint Server 2007, or SharePoint Services 2.0 or 3.0 must be used on instances monitored with the Manage SharePoint Capacity tool
- Spotlight on SQL Server Enterprise v2.0.2 must be configured for instances to use the Performance Capacity tool
- Microsoft SQL Server Books Online is highly recommended. Go to Microsoft's support web site and search for SQL Server Books Online: <http://support.microsoft.com/>

reorganization options. With the enhanced scheduling mechanism, you can set up reorganization jobs during maintenance periods.

### Consolidated Fragmentation Reporting

Consolidate all fragmentation reports and analyze current and future fragmentation of database objects.

### Informed Performance Capacity Planning

Leverage historical data and charts from Spotlight® on SQL Server Enterprise statistics repository (if Spotlight is installed) to anticipate the impact of capacity on performance.

### Thorough Fragmentation and Fill Factor Monitoring

Monitor changes in fragmentation and fill factor at the group, instance, or database levels.

### SharePoint Management Module

Use graphical tools to easily manage the current and future needs of content databases specific to SharePoint.

### PowerShell Command Line Interface Management

Use the Windows PowerShell technology to directly access Quest Capacity Manager functionality without opening the console

### Streamlined Database Profile Views

Group database objects used by a particular application in one entity and display growth on a single chart.

### About Quest Software, Inc.

Quest Software, Inc., a leading enterprise systems management vendor, delivers innovative products that help organizations get more performance and productivity from their applications, databases, Windows infrastructure and virtual environments. Through a deep expertise in IT operations and a continued focus on what works best, Quest helps more than 90,000 customers worldwide meet higher expectations for enterprise IT. Quest provides customers with client management as well as server and desktop virtualization solutions through its subsidiaries, ScriptLogic, Vizioncore and Provision Networks. Quest Software can be found in offices around the globe and at [www.quest.com](http://www.quest.com).



2007 GLOBAL ISV  
PARTNER OF THE YEAR



Quest Software Incorporated. • To learn more about our solutions, contact your local sales representative or visit [www.quest.com](http://www.quest.com) • Headquarters: 5 Polaris Way, Aliso Viejo, CA 92656, USA

© 2008 Quest Software Incorporated. ALL RIGHTS RESERVED. Quest Software and Quest Capacity Manager For SQLServer are trademarks and registered trademarks of Quest Software, Inc. in the U.S.A. and/or other countries. All other trademarks and registered trademarks are property of their respective owners.

DSD-QuestCapacityManagerForSQLServer-US-2008-6-6-EW