



Quest GPOADmin 5.0

What's New



This guide contains proprietary information protected by copyright. The software described in this guide is furnished under a software license or nondisclosure agreement. This software may be used or copied only in accordance with the terms of the applicable agreement. No part of this guide may be reproduced or transmitted in any form or by any means, electronic or mechanical, including photocopying and recording for any purpose other than the purchaser's personal use without the written permission of Quest Software, Inc.

The information in this document is provided in connection with Quest products. No license, express or implied, by estoppel or otherwise, to any intellectual property right is granted by this document or in connection with the sale of Quest products. EXCEPT AS SET FORTH IN QUEST'S TERMS AND CONDITIONS AS SPECIFIED IN THE LICENSE AGREEMENT FOR THIS PRODUCT, QUEST ASSUMES NO LIABILITY WHATSOEVER AND DISCLAIMS ANY EXPRESS, IMPLIED OR STATUTORY WARRANTY RELATING TO ITS PRODUCTS INCLUDING, BUT NOT LIMITED TO, THE IMPLIED WARRANTY OF MERCHANTABILITY, FITNESS FOR A PARTICULAR PURPOSE, OR NON-INFRINGEMENT. IN NO EVENT SHALL QUEST BE LIABLE FOR ANY DIRECT, INDIRECT, CONSEQUENTIAL, PUNITIVE, SPECIAL OR INCIDENTAL DAMAGES (INCLUDING, WITHOUT LIMITATION, DAMAGES FOR LOSS OF PROFITS, BUSINESS INTERRUPTION OR LOSS OF INFORMATION) ARISING OUT OF THE USE OR INABILITY TO USE THIS DOCUMENT, EVEN IF QUEST HAS BEEN ADVISED OF THE POSSIBILITY OF SUCH DAMAGES. Quest makes no representations or warranties with respect to the accuracy or completeness of the contents of this document and reserves the right to make changes to specifications and product descriptions at any time without notice. Quest does not make any commitment to update the information contained in this document.

If you have any questions regarding your potential use of this material, contact:

Quest Software World Headquarters
LEGAL Dept
5 Polaris Way
Aliso Viejo, CA 92656
www.quest.com
email: legal@quest.com

Refer to our Web site for regional and international office information.

Trademarks

Quest, Quest Software, the Quest Software logo, GPOADmin, are trademarks and registered trademarks of Quest Software, Inc in the United States of America and other countries. Other trademarks and registered trademarks used in this guide are property of their respective owners.

Third Party Contributions

Quest GPOADmin contains some third party components (listed below). Copies of their licenses may be found on our website at <http://www.quest.com/legal/third-party-licenses.aspx>.

COMPONENT	LICENCE OR ACKNOWLEDGEMENT
SharpZipLib 0.85.1.271	SharpZipLib 0.85.1
Windows Installer XML toolset (aka WIX) 3.0.3704.	Copyright ©2000-2009 IC#Code. All rights reserved. Windows Installer XML toolset (aka WIX) 3.0

Quest GPOADmin What's New
Updated - January 2010
Software Version - 5.0

CONTENTS

- What's New in GPOAdmin 5.0 5**
 - Multi-Forest Support for GPO Management. 5
 - Support for Automation through Scripting 5
 - Watcher Service to Detect Unauthorized GPO Changes 5
 - Extended GPM Console to Provide a Familiar Interface. 6
 - Locking GPOs to Prevent Unwanted Changes 6
 - Cloaking (Hiding) of GPOs Prior to Production. 7
 - GPO Searching for Specific GPO Settings Across Multiple GPOs. 7
- About Quest Software. 8**
- Contacting Quest 8**

What's New in GPOADmin 5.0

As a result of ongoing research and development, and in response to customer feedback, the following enhancements have been made in this release of Quest GPOADmin 5.0.

Multi-Forest Support for GPO Management

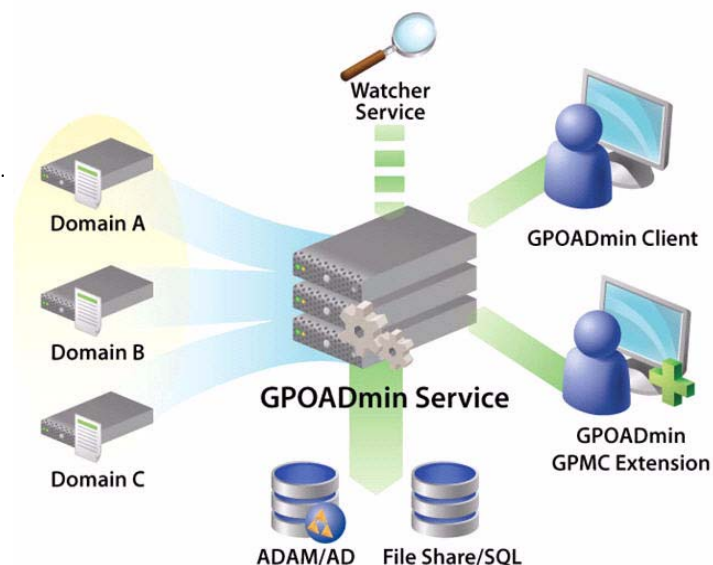
Many environments need to utilize multiple Active Directory forests. Multi-forest support for GPO management enables you to manage the GPO settings from many different forests in a single deployment, thus simplifying deployment and use.

Support for Automation through Scripting

This feature allows administrators to automate many functions of GPOADmin. With support for scripting languages such as PowerShell, administrators can automate such tasks such as Importing, Registering, Rollback, freeing themselves up for other tasks within their organization.

Watcher Service to Detect Unauthorized GPO Changes

The Watcher Service protects an organization from unauthorized changes by automatically detecting changes to GPOs made outside of the GPOADmin Version Control system. An optional component of GPOADmin, the Watcher Service will automatically version a GPO that is modified in the live environment. If the change is valid, an administrator can either incorporate the change into the Version Control system or roll back the change to the previous deployed version of the GPO.

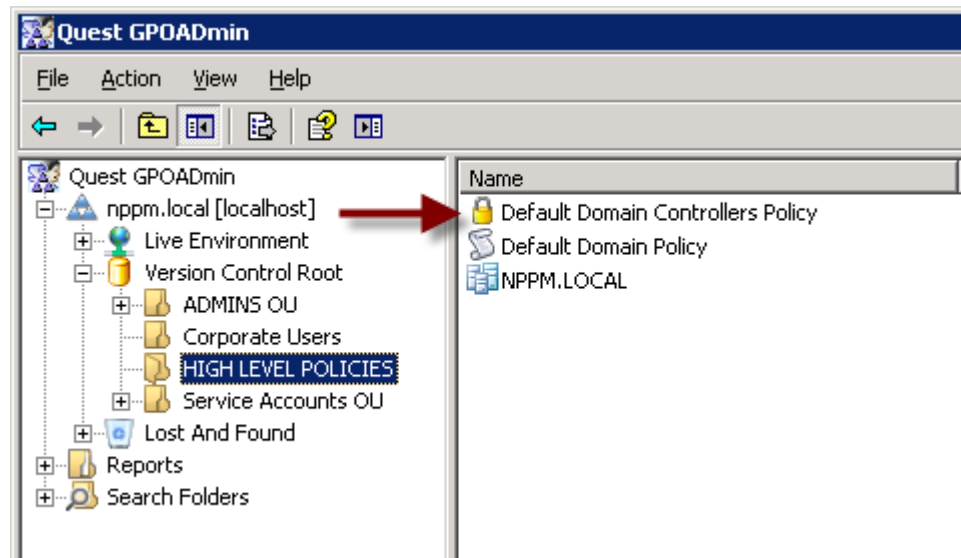


Extended GPM Console to Provide a Familiar Interface

The GPMC Extension gives users the choice of working within a familiar interface that incorporates all the benefits of GPOAdmin. When the GPM console is started, the user will see an extra GPO Management tab they can use to perform GPOAdmin functions such as editing, locking or hiding GPOs.

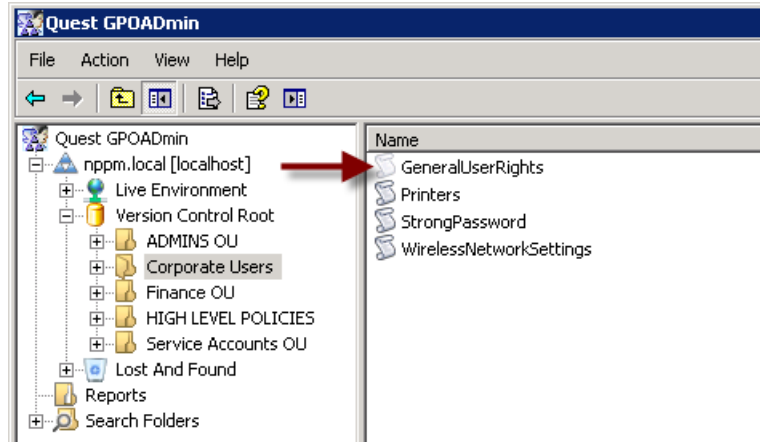
Locking GPOs to Prevent Unwanted Changes

The Locking feature prevents GPOs from being modified. This feature protects GPOs that absolutely must not be modified, such as the business critical policy that needs to be protected. By locking the GPO, accidental changes are prevented.



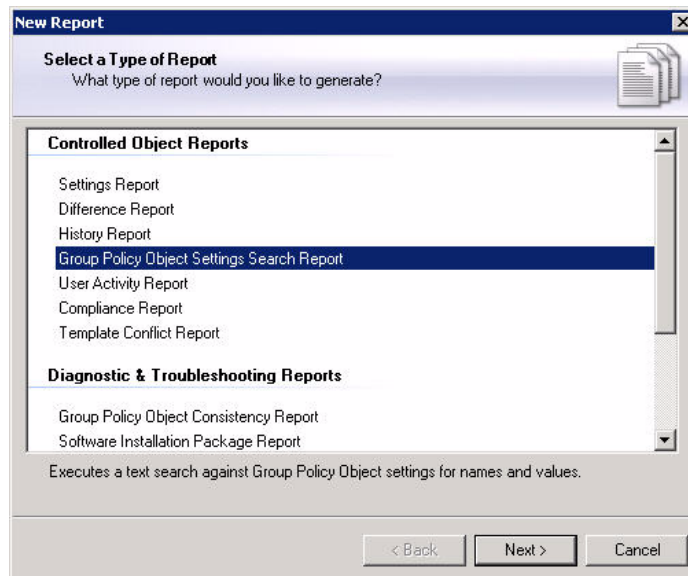
Cloaking (Hiding) of GPOs Prior to Production

The Cloaking feature allows you to hide GPOs that may be old and out of date, or new and not yet ready for deployment. This feature is used to aid administrators in the safe creation of GPOs by hiding the policy, thus preventing unwanted users from accessing it, until it is ready for the production environment.



GPO Searching for Specific GPO Settings Across Multiple GPOs

GPO Searching allows users to find any setting containing specified key words. This feature is used to locate a GPO in the event that the administrator may not remember that GPO's specific settings. Being able to search for a setting across multiple GPOs solves this issue.



About Quest Software

Now more than ever, organizations need to work smart and improve efficiency. Quest Software creates and supports smart systems management products—helping our customers solve everyday IT challenges faster and easier. Visit www.quest.com for more information.

Contacting Quest

Email	info@quest.com
Mail	Quest Software, Inc. World Headquarters 5 Polaris Way Aliso Viejo, CA 92656 USA
Web site	www.quest.com

Refer to our Web site for regional and international office information.